



MP260

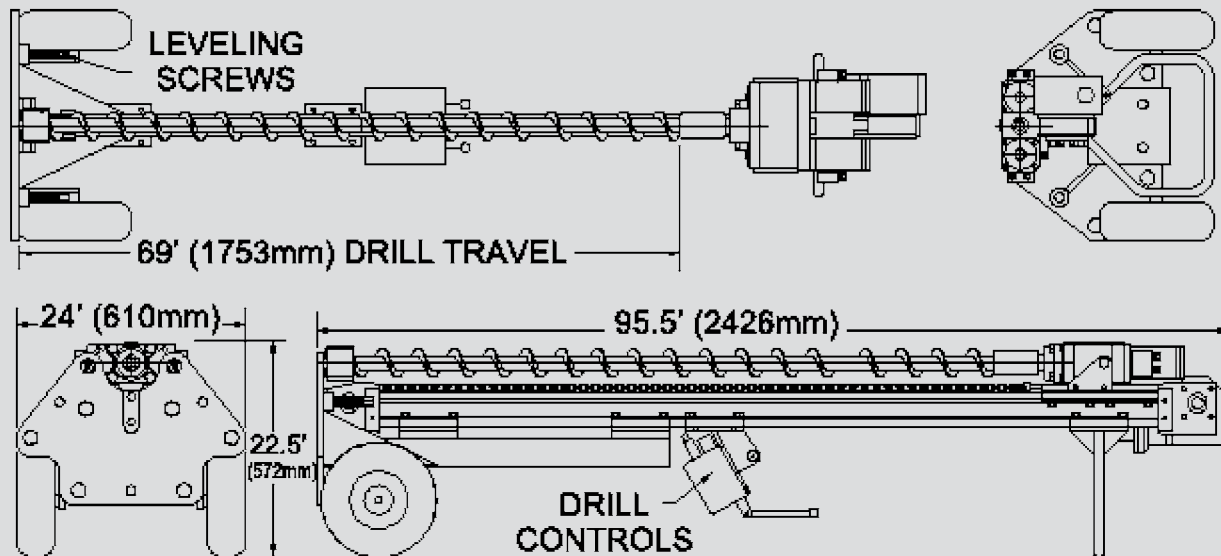
MAN-PORTABLE 2-WHEEL



TEI ROCK DRILLS

PO BOX 1309, MONTROSE, CO 81402

(800) 777-3745 • (970) 249-1515 • www.teirockdrills.com



DRILL SPECIFICATIONS

MP260

Drill weight is approx. 450 LBS.

Hydraulic Requirements:

- RDS250 rotary drive 18 GPM @ 2000 PSI
- TE260 hydraulic drifter 25 GPM @ 1850 PSI

Optional:

- HCA4 Hydraulic Clamp
Opening 1.25" - 4.0"

ACF5 hydraulic chain feed:

- 5.5' of drill travel
- 1,500 LBS. Of pullback

DM250A Gasoline Power Unit:

- Briggs & Stratton 37 HP gas engine
- 12-volt electric start
- 18 GPM of hydraulic flow @ 2000 PSI
- 10 gallon fuel tank
- Total weight 690 LBS

DM300 Diesel Power Unit:

- Cummins 60 HP diesel engine
- 12-Volt electric start
- Adjustable hydraulic flow and pressure
- Up to 40 GPM @ 2250 PSI hydraulic flow
- 30-gallon hydraulic tank with fan cooler
- 25 Gallon diesel fuel tank
- Total weight 1850 LBS.

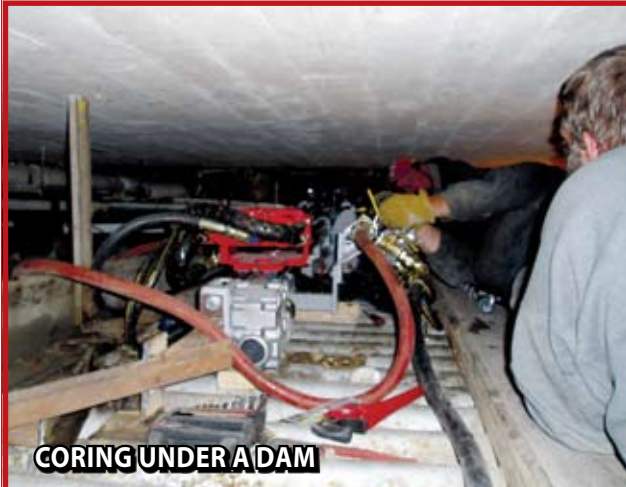
ALL ATTACHMENT CARRIERS MUST BE PLUMBED WITH LOW PRESSURE RETURN AUXILIARY HYDRAULICS. AN ADDITIONAL HYDRAULIC OIL COOLER IS RECOMMENDED FOR PRODUCTION DRILLING. SPECIFICATIONS SUBJECT TO CHANGE WITHOUT NOTICE.



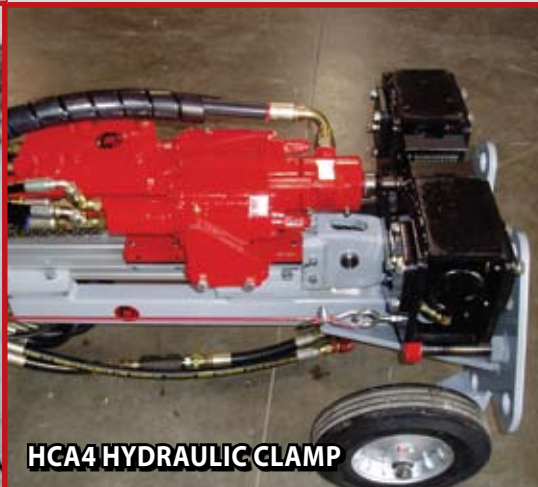
The wheeled cart version of the MME line is designed for use in very limited access drill sites. The base of this drill can be attached to basement walls, scaffolding and jacked into crawl spaces to get to the holes no one else can. By looking at the different pictures you can see why the **MP260** is such a handy tool for foundation repair. The **MP260** uses an aluminum mast to carry either the RDS250 rotary drill or TE260 drifter.



MP250 UNDER HOSPITAL



CORING UNDER A DAM



HCA4 HYDRAULIC CLAMP



**PRE-DRILLING FOR
RESISTANCE PIERS**



**INDOOR DRILLING
USING A VACCUM**



DM250 GAS POWER UNIT



DM300 DIESEL POWER UNIT



MP250 ON PIER BRACKET