

RDS250

ROTARY HEAD

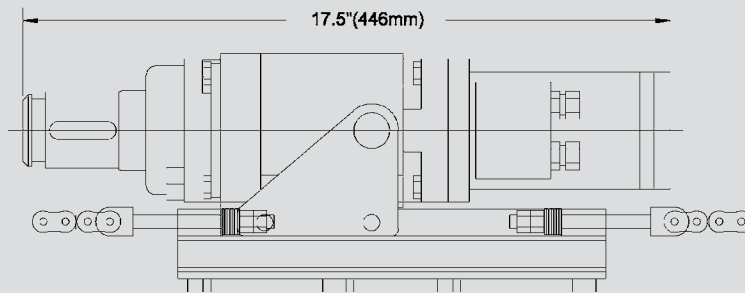
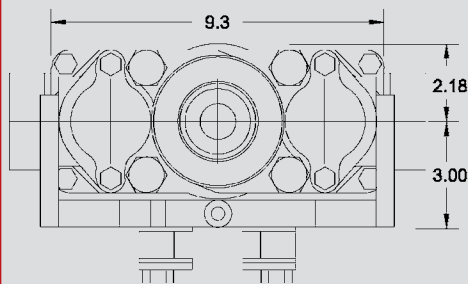
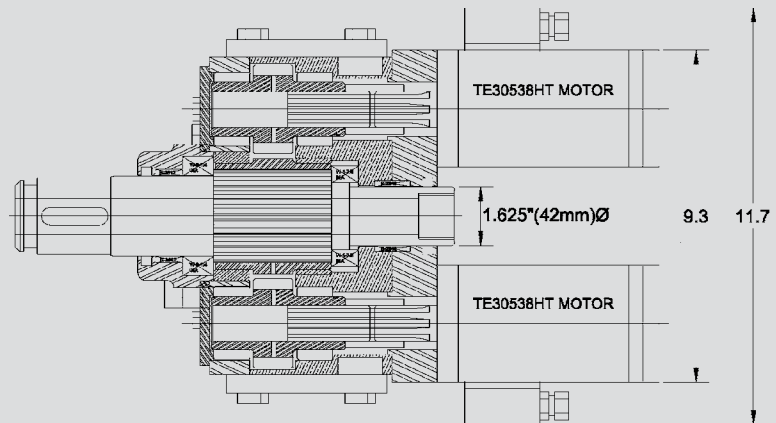


TEI ROCK DRILLS

PO BOX 1309, MONTROSE, CO 81402

(800) 777-3745 • (970) 249-1515 • www.teirockdrills.com

Weight: 106 lbs.



DRILL SPECIFICATIONS

Stock output threads for RDS250:

- CA21 male
- 2 3/8 API Regular male and female
- 1 5/8" auger hex
- 1 3/8" auger hex
- Other threads available

Specifications:

- Up to 400 RPM
- Up to 1,000 ft/lbs of torque
- Hydraulic flow for 1,000 ft/lbs is 9 RPM per 1 GPM of hydraulic flow
- Hydraulic Supply Pressure 2250 PSI
- 1/2" JIC hydraulic connections
- 7/8" flushing ID on output shaft

Used on the ACF feed system.

ALL ATTACHMENT CARRIERS MUST BE PLUMBED WITH LOW PRESSURE RETURN AUXILIARY HYDRAULICS. AN ADDITIONAL HYDRAULIC OIL COOLER IS RECOMMENDED FOR PRODUCTION DRILLING. SPECIFICATIONS SUBJECT TO CHANGE WITHOUT NOTICE.



RDS250 ON MME